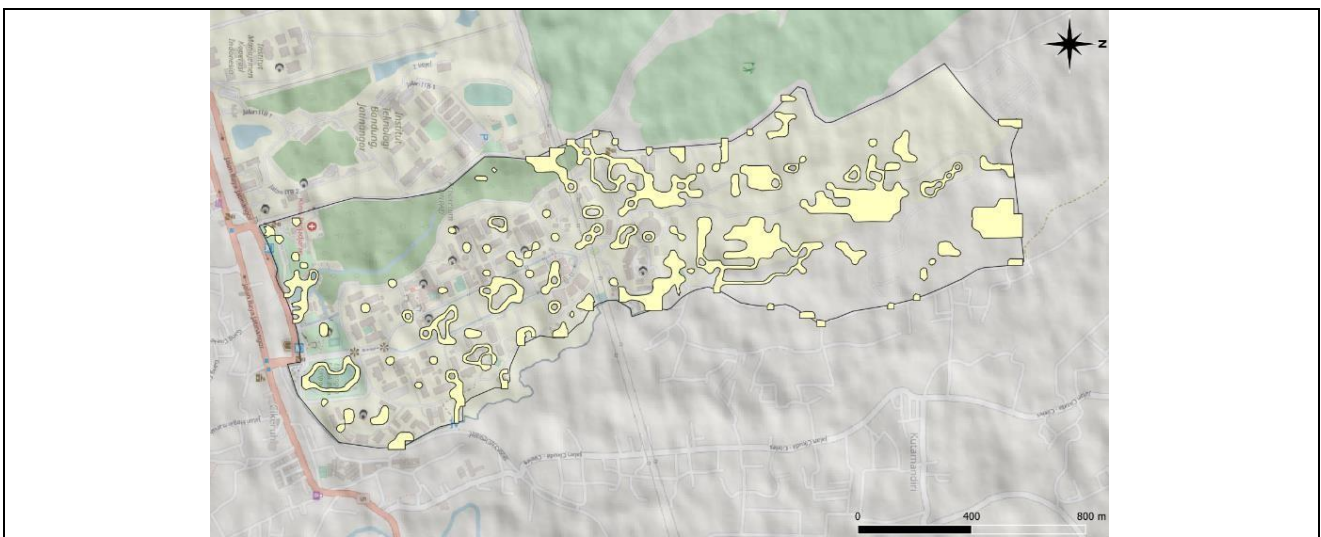




Total area on campus for water absorption besides forest and planted vegetation (meter²)



Total area on campus for water absorption besides forest and planted vegetation



Description:

In addition to the forest area, green lines, and parks, the rain garden, and unplanted land also have a function as rainwater absorption. The rain garden area is located in the southern part of the rectorate building which was made to harvest and absorb rainwater and runoff from the roof of the building, built-up land, parking areas, and roads. Meanwhile, the unused land areas that have not been planted are mostly scattered on the upper campus, which is overgrown by wild plants such as grass or shrubs. The total area of the campus that is utilized as a rainwater absorber besides the campus forest and the area planted with vegetation is 301,499.71 m².

Total area on campus for water absorption besides forest and planted vegetation : 301,499.71 m²
Ratio : 16.92%