



University : Universitas Padjadjaran
Country : Indonesia
Web Address : <https://www.unpad.ac.id/>

Setting and Infrastructure (SI)

Campus Facilities for Disabled, Special Needs, and/or Maternity Care

Description:

During the 2024–2025 period, Universitas Padjadjaran recorded 74 main buildings encompassing faculties, administrative centers, and supporting units. Among these, the number of buildings equipped with disability-friendly facilities showed consistent progress, increasing from 65 buildings (88%) in 2024 to 68 buildings (91.89%) in 2025. This advancement demonstrates the university's strong dedication to creating an inclusive, equitable, and accessible campus environment.

These improvements were driven by key institutional policies, including Rector's Regulation of Universitas Padjadjaran No. 23 of 2021 on Services for Students with Disabilities, the establishment of the Disability Service Center (*Unit Layanan Disabilitas/ULD*) in 2024, and Rector's Regulation of Universitas Padjadjaran No. 7 of 2025, which broadened ULD's role to support the university's Tridharma pillars, education, research, and community service.

This continuous progress aligns with national accessibility standards set out in the Ministry of Public Works and Housing Regulation (*Peraturan Menteri PUPR*) No. 14/PRT/M/2017 concerning building accessibility, as well as with global frameworks such as the United Nations Sustainable Development Goals (SDGs) specifically SDG 4 (Quality Education), SDG 10 (Reduced Inequalities), and SDG 11 (Sustainable Cities and Communities). Together, these frameworks reinforce Unpad's commitment to ensuring that all members of the academic community, including students, faculty, staff, and visitors, can engage fully, equally, and safely in every aspect of university life.

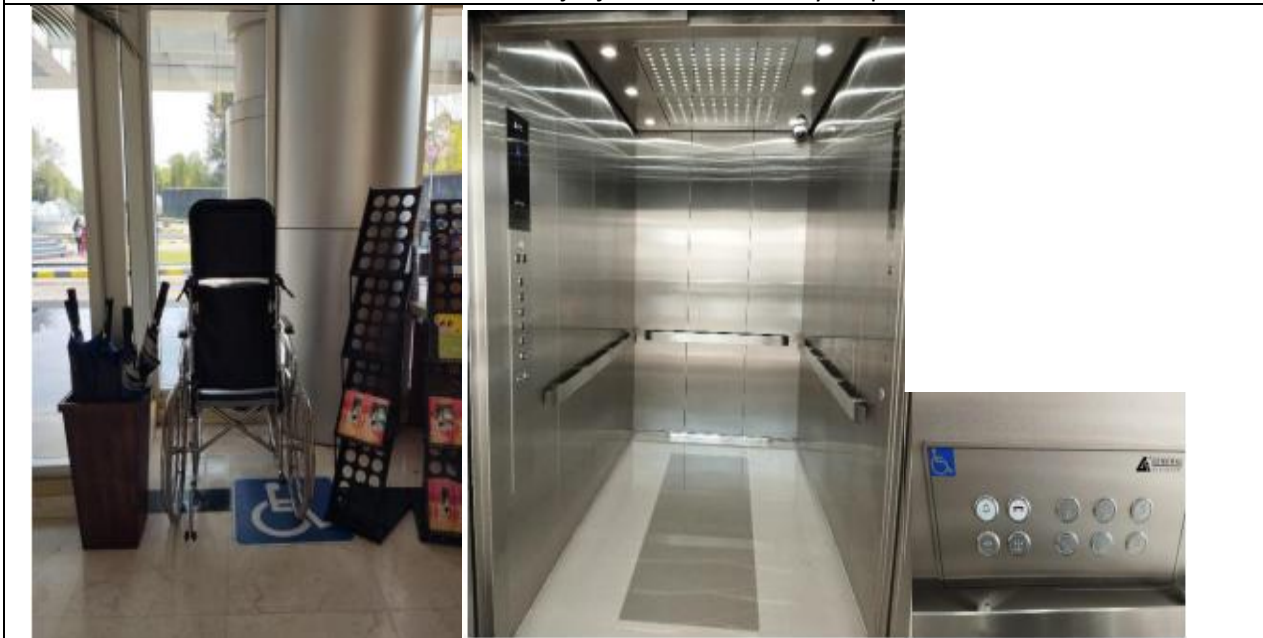
To eliminate physical and environmental barriers, Unpad has developed and improved various disability-friendly facilities across its campuses, including:

- Ramps and sloped pathways at the main building entrances ensure smooth access for individuals using wheelchairs. By 2025, over 70% of these ramps met the recommended slope ratio (1:12) for safe and convenient mobility.
- Elevators equipped with Braille buttons and voice guidance systems in 12 multi-story academic and administrative buildings, allowing independent navigation for visually impaired users.
- Accessible toilets with a minimum turning radius of 1.5 meters and safety handrails are now available in 68% of buildings, representing a significant increase from 2024.
- Designated parking spaces for persons with disabilities, expanded from 40 slots in 2024 to 56 slots in 2025, strategically located near main entrances to minimize travel distance and enhance convenience.

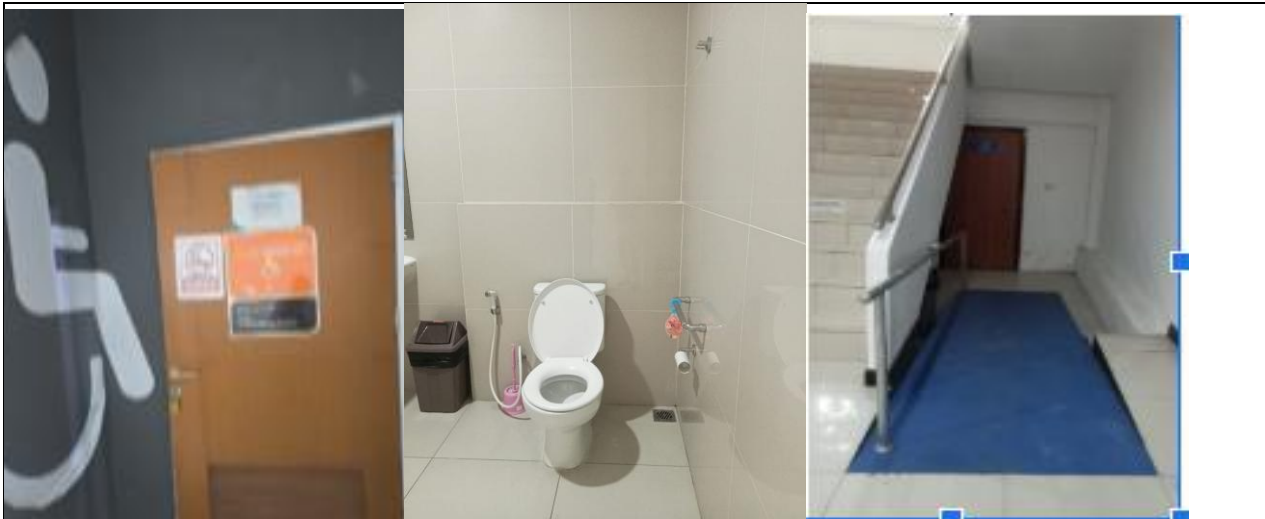
These facilities are strategically designed and located to ensure accessibility within both main academic buildings and supporting infrastructure, including the Rectorate Building, faculty and dean offices, lecture halls, and laboratories. The accessibility features are not limited to academic areas. Still, they are also integrated into supporting facilities such as student dormitories, activity centres, and sports complexes, allowing students and staff with disabilities to fully participate in academic, residential, and extracurricular activities. Pathways, ramps, and accessible restrooms have been incorporated into campus design in accordance with universal design principles, ensuring safety, mobility, and independence for all users. This integrated approach reflects Universitas Padjadjaran's ongoing efforts to create an inclusive, barrier-free learning environment that upholds equality, dignity, and the well-being of every member of the academic community. Below are examples of facilities available at Universitas Padjadjaran for people with disabilities.



Universitas Padjadjaran's accessibility map.



Example of facilities for individuals with disabilities and special needs in the Universitas Padjadjaran area.



Example of sign and disability toilet facilities at Universitas Padjadjaran area.



Example of disabled parking at Universitas Padjadjaran area.



Example of a wheelchair drop area at Universitas Padjadjaran in Campus Jatinangor, Dipati Ukur and Pangandaran



Example of automatic door facilities in the Universitas Padjadjaran area.



Examples of ramp facilities at Universitas Padjadjaran.



Examples of ramps with guiding blocks for pedestrians at Universitas Padjadjaran.



Example of guiding blocks in the Universitas Padjadjaran area.

Beyond infrastructure, Unpad also emphasizes non-physical accessibility through initiatives led by the Disability Service Center (ULD). ULD upholds three core pillars of responsibility aimed at fostering an inclusive campus



environment, while actively supporting the academic development and potential of individuals with disabilities. Under Pillar 1, ULD focuses on empowering students with special needs through need assessments, academic coaching, and mentoring programs, as well as providing assistive learning technologies such as speech-to-text tools, adjustable tables, and recording devices.

Pillar 2 focuses on advocating for sustainable accessibility facilities, including accessibility assessments across faculties and coordination with the Directorate of Facilities and Infrastructure to ensure continuous improvement. Meanwhile, Pillar 3 promotes a campus-wide inclusive culture through awareness campaigns, faculty training sessions, benchmarking visits (e.g., to PSLD UIN Sunan Kalijaga and PUSDIS Unhas), and collaborations with disability organizations such as BILIC (Bandung Independent Living Center) and KONEKIN (*Komunitas Nasional Edukasi Inklusif Indonesia/Indonesian National Community of Inclusive Education*).

Overall, these ongoing efforts not only comply with regulatory standards but also embody Unpad's core values of equality, diversity, and inclusivity. Guided by its 2025–2029 Strategic Plan vision "To become a world-class center for inclusive and sustainable education and knowledge, fostering global innovation and societal impact", Unpad has positioned itself as a national model for inclusive higher education infrastructure.



Universitas Padjadjaran's commitment to Inclusivity.



Inclusive facilities.

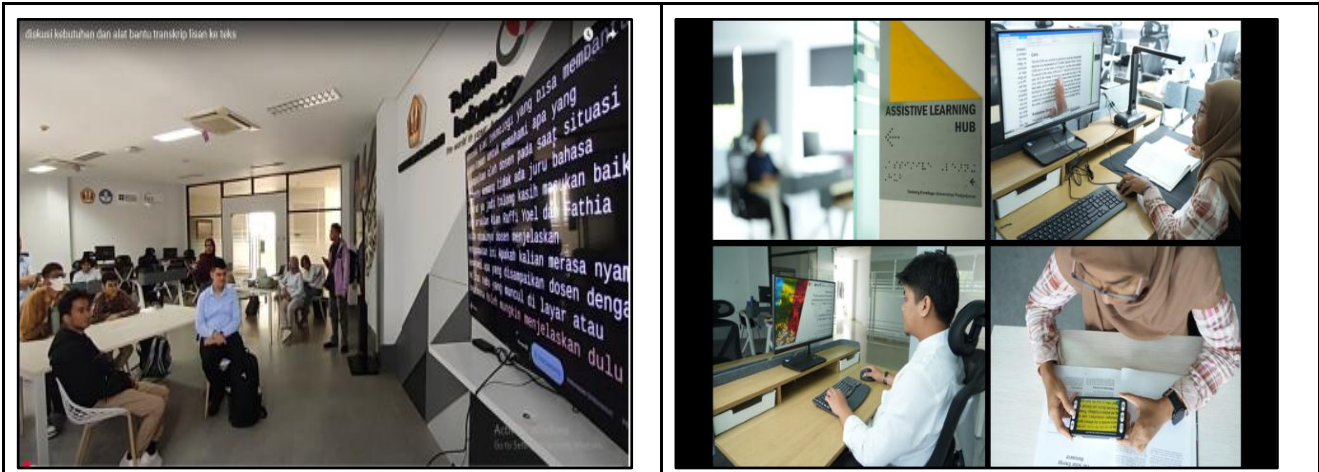


Actions:

During 2025 ULD, the program had arranged a series of activities designed to enhance institutional collaboration, improve service quality, and strengthen student engagement, including a coordination meeting with the Directorate, dialogues with students with disabilities to identify academic and social challenges, and a benchmarking visit to ULD Suwam Kliaga for exchanging best practices in disability inclusion. Furthermore, a workshop on the registration and data validation of students with disabilities was conducted to ensure accurate service mapping, followed by a meeting with the Rector to reinforce leadership support for inclusive campus policies. To complement these efforts, ULD also facilitated an online meeting between students with disabilities and the Global Campus Unit (GCU) to promote digital accessibility in learning environments.

Additionally, the program expanded its focus to emphasize empowerment and collaboration. ULD supported students with disabilities in participating in a financial literacy seminar at Telkom University, aiming to enhance their economic independence and financial awareness. Furthermore, the unit facilitated a meeting between the KND Commission and Marketing Beetech, exploring partnership opportunities related to accessibility innovations and the development of assistive technology. Altogether, these initiatives illustrate Universitas Padjadjaran’s proactive and integrated approach to creating a barrier-free, inclusive campus ecosystem, aligning with its vision of equal opportunity, dignity, and full participation for all members of the academic community.





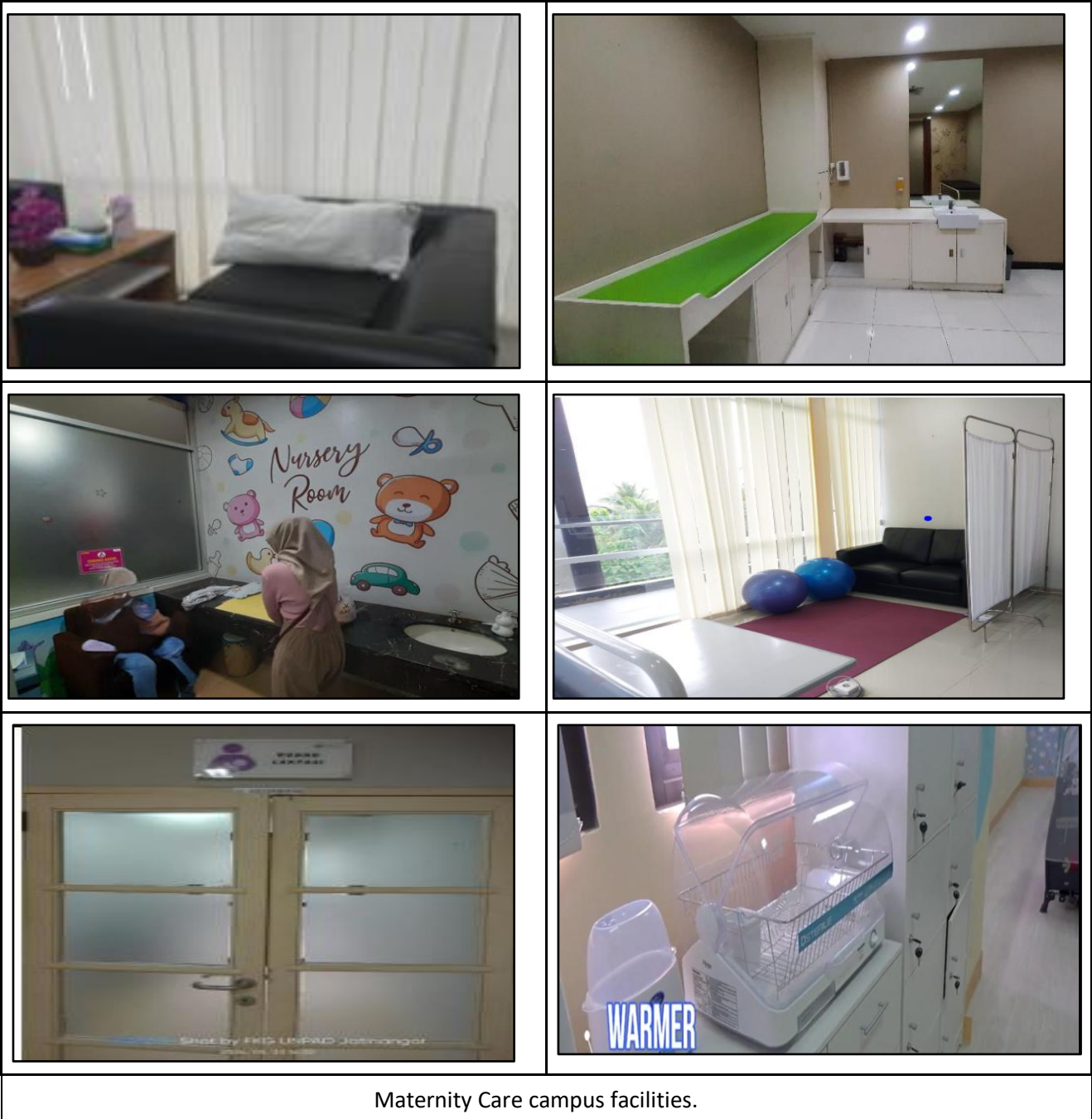
Equipment and resources at the Disability Service Unit (ULD) and the Assistive Learning Hub.



Assistance activities and training for assistants.

In addition to inclusive infrastructure, Universitas Padjadjaran has also developed several maternity and family-friendly support facilities to promote the well-being of its academic community, particularly women and parents balancing professional or academic responsibilities with family care. Additionally, several maternity support facilities are available in various buildings to cater to the needs of the academic community. These include lactation rooms, which are available in many faculties and units and are equipped with comfortable seating, sinks, and electrical outlets for breast pumps.

Among these facilities are lactation rooms, which have been established in multiple faculties, administrative offices, and academic support units. In 2025, there are over 20 lactation rooms across the Jatiningor, Dipati Ukur, and Pangandaran campuses. Each room is designed to ensure privacy, hygiene, and comfort for breastfeeding mothers.



Maternity Care campus facilities.

In alignment with Universitas Padjadjaran's commitment to promoting a family-friendly and inclusive academic environment, the university has established daycare facilities as part of its maternity care support system. One of these facilities, the Healthy Child Care Centre (PUSPA), was inaugurated on June 15, 2010, pursuant to the Dean of the Faculty of Nursing's Decree No. 94/H6.7.7.FIK/FEK/KP/2010. PUSPA provides comprehensive early childhood care and education services that encompass biological, psychological, social, and spiritual dimensions of child development. In addition to offering a nurturing environment, the centre conducts growth and developmental monitoring to ensure the holistic well-being of each child. The daycare serves children aged two months to six years and operates from 7:30 a.m. to 4:00 p.m., Monday through Friday, facilitating access to reliable childcare for university staff, students, and employees. To date, Universitas Padjadjaran maintains two daycare centres across different campuses, underscoring its dedication to advancing gender equity, work-life balance, and the well-being of the academic community.





Additional evidence links:

1. **Services for Students with Disabilities at Universitas Padjadjaran (*Pelayanan Mahasiswa Penyandang Disabilitas Di Lingkungan Universitas Padjadjaran*)**

<https://jdih.unpad.ac.id/dokumen/pelayanan-mahasiswa-penyandang-disabilitas-di-lingkungan-universitas-padjadjaran/>



2. **Task Force for Students with Disabilities at Universitas Padjadjaran (*Satuan Tugas Bagi Mahasiswa Penyandang Disabilitas Universitas Padjadjaran*)**

<https://jdih.unpad.ac.id/dokumen/satuan-tugas-bagi-mahasiswa-penyandang-disabilitas-universitas-padjadjaran/>



3. **Study of Health and Lactation at Universitas Padjadjaran**

<https://drive.google.com/file/d/1BD4XDy18dK8xxcWevoOUrGMP7vE0vbfX/view>





4. Map of Accessibility Unpad

Jatinangor:

<https://drive.google.com/file/d/1Qoa7VN2ZE21F54s0Nb3XxSSgtv4qk5ZC/view?usp=sharing>

Dipatiukur:

https://drive.google.com/file/d/1ibq2E_u7eOcViGVWVVRnKZRUDVNcDKkV/view?usp=drive_link

Pangandaran:

https://drive.google.com/file/d/1yJx65hxb0TZOqYLU4VlgpebsVF3wnYc/view?usp=drive_link

5. PUSPA Daycare

<https://www.instagram.com/imcarepuspa?igsh=YjlxNThtN2ExOGhk>

6. Accessibility Campus Survey

<https://www.unpad.ac.id/2025/07/menggali-perspektif-dan-evaluasi-kondisi-aktual-aksesibilitas-kampus/>

7. Unpad Strengthens Commitment to Creating an Accessible Campus Environment for All

<https://www.unpad.ac.id/2025/07/unpad-perkuat-komitmen-wujudkan-lingkungan-kampus-yang-aksesibel-bagi-semua/>

8. Universitas Padjadjaran Opens Special Pathways for People with Disabilities in This Year's Entrance Selection

<https://www.unpad.ac.id/2025/02/universitas-padjadjaran-buka-jalur-khusus-disabilitas-pada-seleksi-masuk-tahun-ini/>

9. Unpad's UTBK Center Facilitates Three Participants with Disabilities

<https://www.unpad.ac.id/2025/04/pusat-utbk-unpad-fasilitasi-tiga-peserta-disabilitas/>